

NPDU

Split type



Integrated type



Intelligent module

Hot swap, powerful network management, remote intelligent monitoring, monitor the equipment environment temperature, humidity, smoke induction, water immersion, entrance guard, etc.

Number	Name
1	Network management port
2	Sensor port
3	82*128 DOTS LCD Display
4	WIFI port
5	Each outlet status indicator
6	4 outlets/grout



300M Wireless USB Adapter



T/H Sensor



Entrance guard Sensor

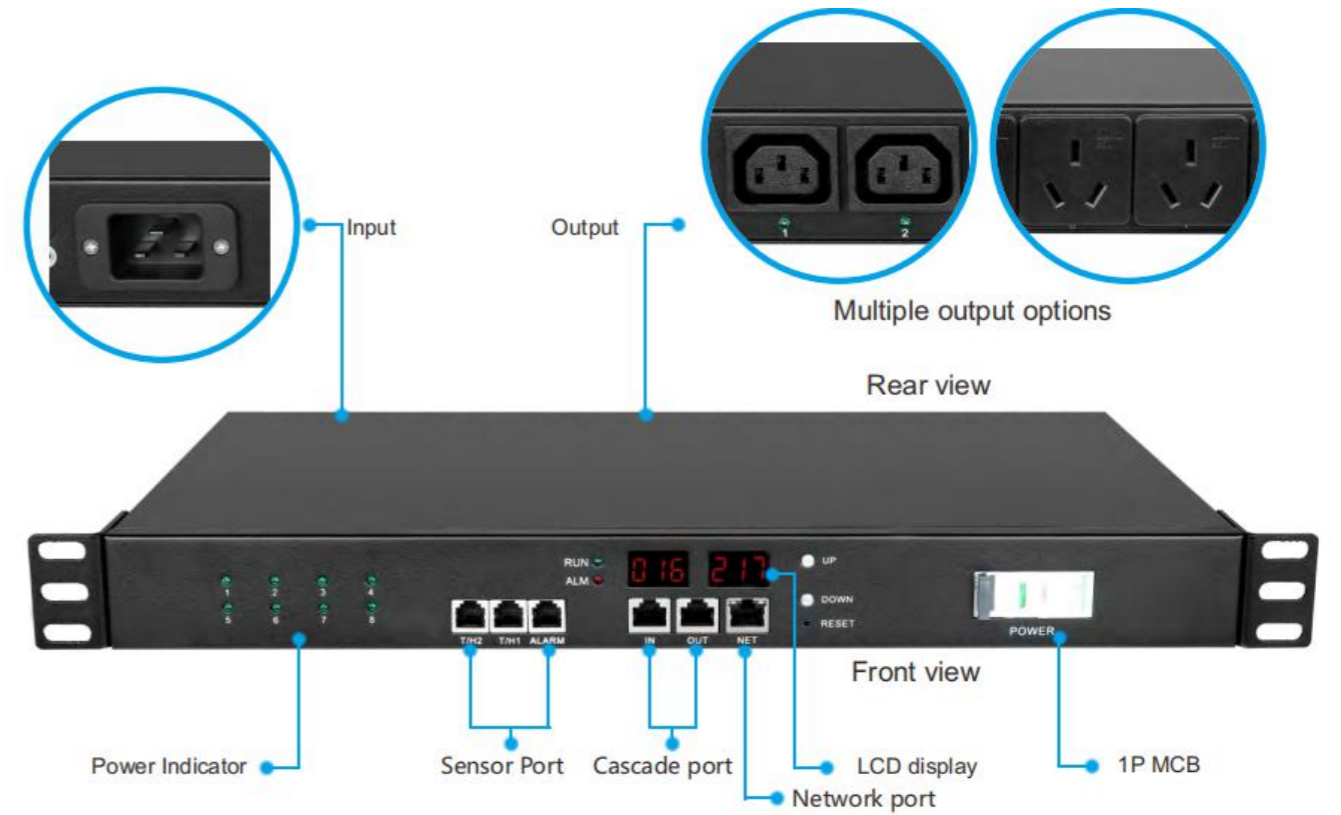
General Function	Monitoring function	Control function
Remote network management	Monitor input voltage	On/off control for each outlet
Cascade management	Monitor total load current	On/off time setting for each outlet
SNMP V1 V2 V3	Monitor total power (KW)	Boot time delay setting
Wifi connecting	Monitor energy consumption (KWH)	Set current limit for each outlet
Data graphical display	Multiple output options	Set temperature and humidity limit
User management	Monitor temperature/humidity	Overload protection (automatic power-off)
The log saved	Monitor each outlet current	
Multiple alarm mode	Calculate each outlet power	
Access management,by telnet,ssh or modbus-rtu	Calculate each outlet energy consumption	
telnet,ssh or modbus-rtu	Entrance guard management	
Multiple output options		

IPDU

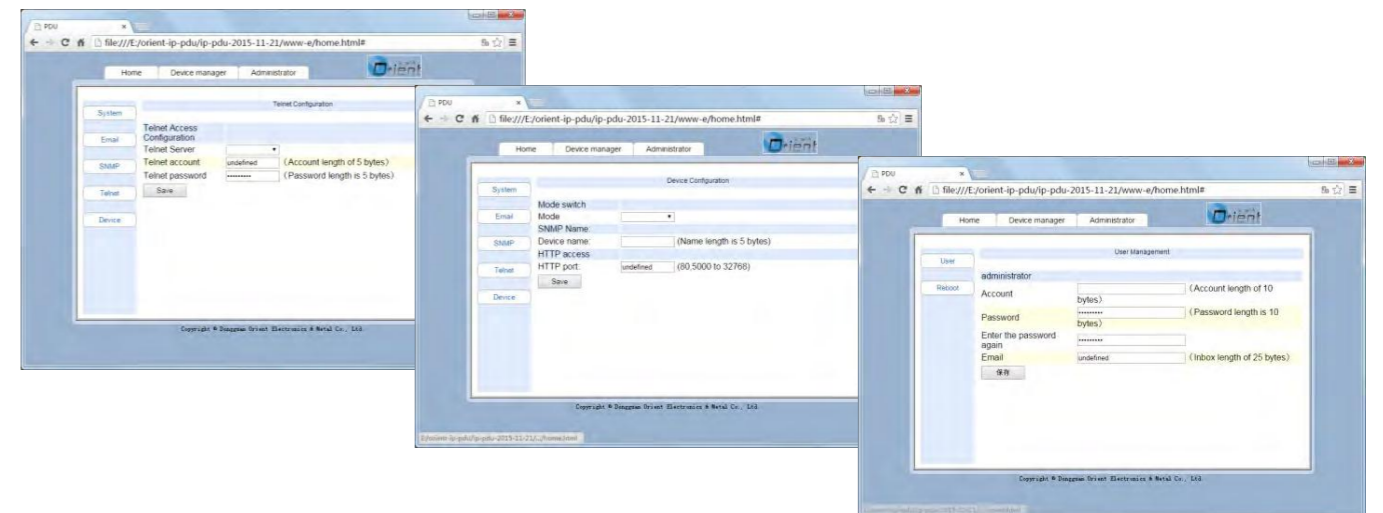


Main Function	IPDU	SPDU
Remote network management	√	
Cascade management	√	√
SNMP V1	√	√
Monitor input voltage	√	√
Monitor total load current	√	√
Monitor total power (KW)	√	√
Monitor enrgy cousumption (KWH)	√	√
Monitor total power factor	√	√
Multiple output options	√	√
Current threshold setting	√	√
Temperature and humidity threshold setting	√	√
Entrance guard managment		

SPDU



Main function		
Remote network management	Monitor enrgy cousumption (KWH)	On/off time setting for each outlet
Cascade management	Monitor total power factor	Set current limit for each outlet
SNMP V1	Monitor temperature/humidity	Set temperature and humidity limit
Monitor input voltage	Current threshold setting	Overload protection (automatic power-off)
Monitor total load current	Temperature and humidity threshold setting	Multiple output options
Monitor total power (KW)	On/off control for each outlet	





U.S.A



6 American outlets + 1 double break switch + 1 overload protector



8 American outlets + 1 switch



12 American outlets + 1 air switch



6 American outlets + 1 switch



8 American outlets + 1 current/voltage display



6 American outlets + 1 switch + 1 overload protector



Australia



6 Australian outlets + 1 overload protector



8 Australian outlets + 1 current/voltage display



8 Australian outlets + 1 Surge lightning protection module



6 Australian outlets + 1 surge/lightning protector + 1 switch



6 Australian outlets + 1 overload protector + 1 switch



6 Australian outlets + 1 circuit breaker



Germany



12 German outlets + 1 double circuit breaker



6 German outlets + 1 circuit breaker



8 German + 1 double break switch



6 German outlets + 1 double circuit breaker



France



8 French outlets + 1 double break switch



6 French outlets + 1 double circuit breaker



6 German outlets + 1 switch + 1 surge protector with 3 indicator



9 German outlets + 1 power indicator



8 German outlets + 1 overload protector



6 German outlets + 1 double break switch + 1 current/voltage display



6 French outlets + 1 double break switch + 1 surge/lightning protector



8 French outlets + 1 double break switch



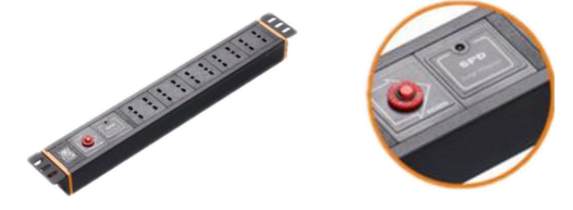
6 French outlets +1 circuit breaker



12 French outlets +1 double circuit breaker



8 Italian outlets +1 surge protector+ 1 overload protector



10 Italian outlets +1 surge/lightning protector+ 1 overload protector



6 French outlets +1 double break switch+ 1 current/voltage protector



U.K



6 British outlets + 1 double break switch + 1 overload protector



6 British outlets +1 double break switch



Italy



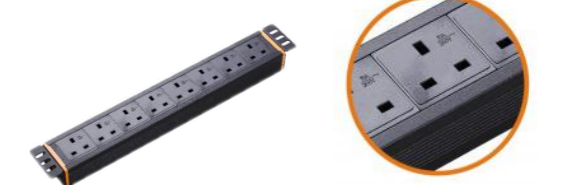
6 Italian outlets + 1 overload protector+1 power indicator



12 Italian outlets +1 double circuit breaker



8 British outlets +1 double break switch



8 British outlets



6 Italian outlets +1 circuit breaker



8 Italian outlets +1 double break switch



6 British outlets +1 overload protector+1 double break switch



6 British outlets +1 double break switch



6 Italian outlets +1 surge protector with 3 indicators



6 Italian outlets +1 double circuit breaker



6 British outlets +1 current/voltage display



IEC



10 Italian outlets +1 double circuit breaker



8 Italian outlets +1 double break switch+1 surge/lightning protector



9 outlets of IEC C13



10 outlets of IEC C13 + 1 switch + 1 Indicator light



8 outlets of IEC C13 + 1 switch



12 outlets of IEC C13 + 1 switch



6 multiple outlets of 10A +1 double break switch + 1 overload protector



16 multiple outlets of 10A +1 double break switch + 1 overload protector+1 surge protector with 1 indicator



8 outlets of IEC C13 + 2 outlets of IEC C19 + 1 current/voltage display



8 outlets of IEC C19 + 1 overload protector +1 indicator light



6 multiple outlets of 10A + 1 overload protector+1 surge protector with 3 indicators



8 multiple outlets of 10A +1 double break switch+1 surge protector with 1 indicator



8 outlets of IEC C19



3 outlets of IEC C19+3 outlets of IEC C13+3 multiple outlets+9 overload protector + 9 indicators



6 multiple outlets of 10A +1 double circuit breaker



6 multiple outlets of 10A +1 surge protector with 3 indicators



8 outlets of IEC C13



6 multiple outlets of 10A +1 surge protector with 1 indicator +1 double circuit breaker



6 multiple outlets of 10A +1 switch + 1 overload protector +1 surge protector with 1 indicator

Multiple



3 multiple outlets of 10A +1 double break switch



6 multiple outlets of 10A +1 double break switch



8 multiple outlets of 10A +1 double break switch



8 multiple outlets of 10A +1 current/voltage display



6 multiple outlets of 10A +1 overload protector+1 surge protector with 3 indicator



8 multiple outlets of 10A +1 overload protector+1 switch



8 multiple outlets of 16A + 1 switch



6 multiple outlets of 10A +1 power indicator +1 double circuit breaker