

New

# Racksmate

---

Power environment intelligent single rack, multi-rack solution

# Product Introduction



## Racksmate

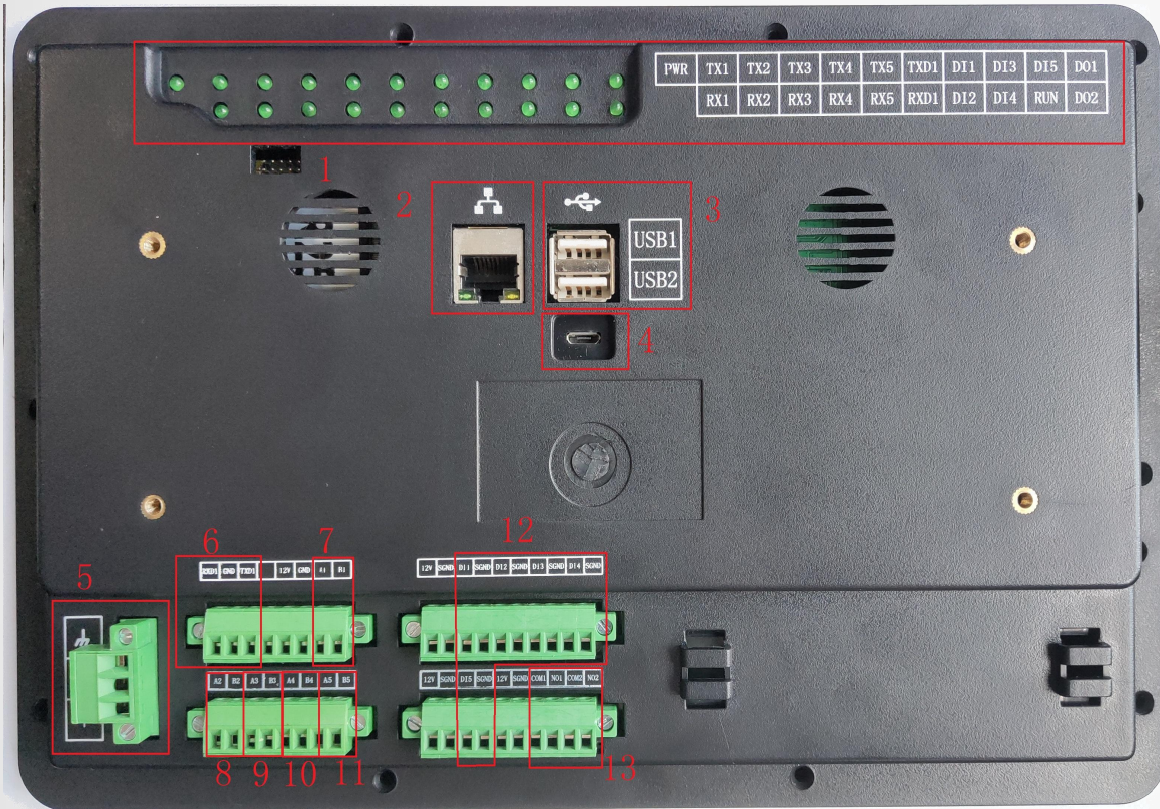
The integrated screen for environment monitoring in the edge computer room uses a 9.7-inch touch screen, which can be used for work through the touch screen, and the inconvenience brought by the traditional 1U monitoring host in the edge computer room and other application scenarios is abandoned. In the era of big data, it is the best choice for building a modern unguarded computer room to meet customers' requirements of convenient installation, saving cabinet space, local visualization, convenient operation, necessary security and linkage operation, etc.



MediaTek integrated screen solution, stable embedded Linux system + Android operating interface

# Product Introduction

## Products Features



Micromodule IDC "Racksmate", a special for single cabinet, multi-cabinet data center monitoring host. Rich hardware interface, enough to meet the single cabinet, most of the multi-cabinet micro module data center equipment access needs



### Power monitoring

1 UPS, 2 common distribution, 2 PDU



### Alarm monitoring

Local sound and light alarm, SMS alarm, mail alarm



### Environment monitoring

2 precision air con, 8 temp/humid, 5 DI

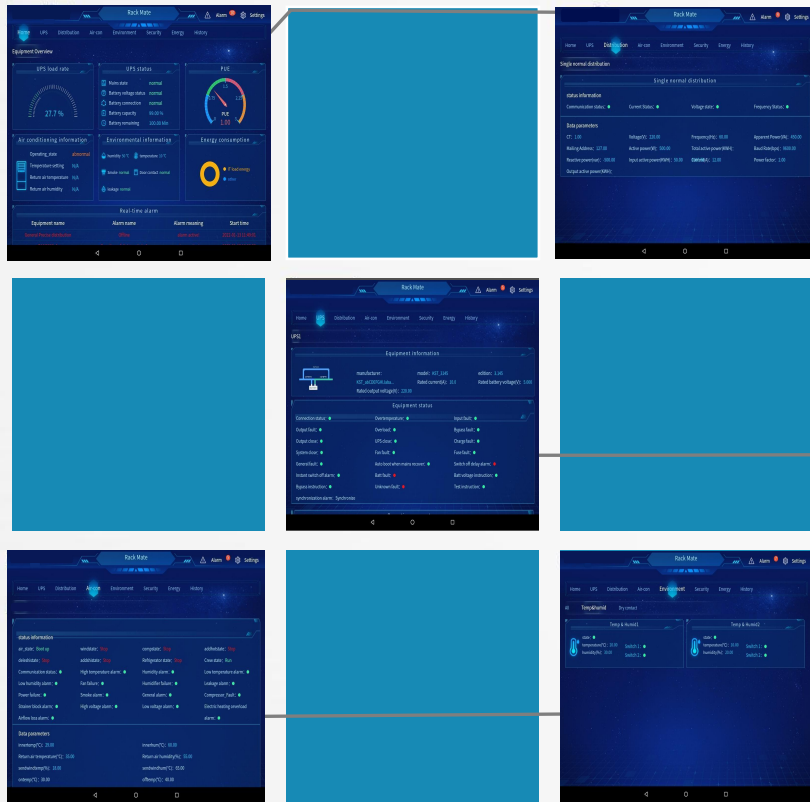


### Security monitoring

2 smart locks, 1 Light strip

# Product Introduction

## Application Scenarios



**System interface :** Monitor the data of UPS, power distribution, air conditioning, environment variables and other machine rooms, and query related alarm parameters in real time.

**Distribution detection:** it can display and monitor the relevant data of common single-phase distribution, three-phase distribution, high-frequency switching power supply, three-phase PDU, single-phase PDU and so on in real time

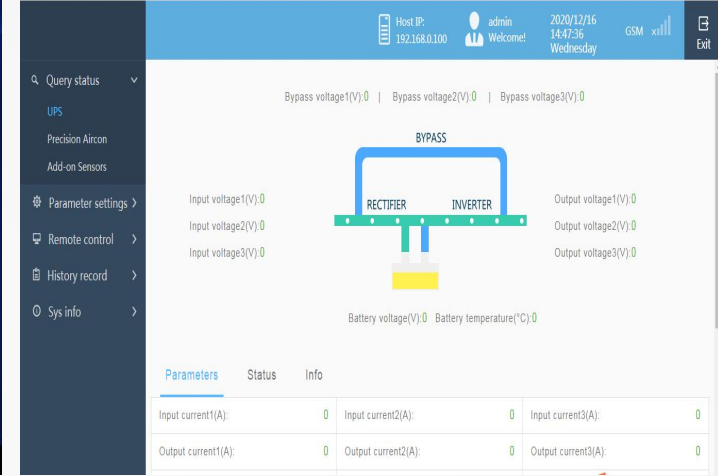
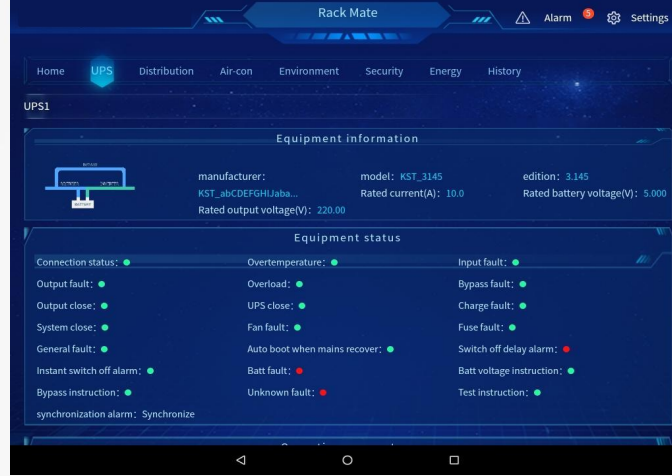
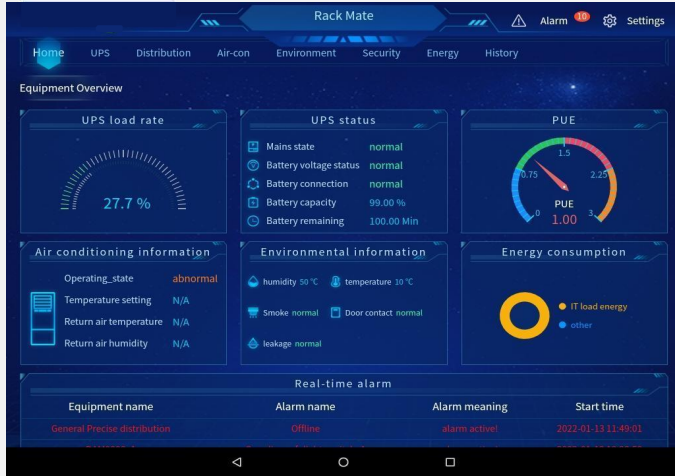
**UPS monitoring :** Can detect three phase UPS, single phase UPS operation and other related data

**Air con monitoring:**Can detect the machine room precision air conditioning operation and other relevant data

**Environmental monitoring:**Can detect the room environment variables and other relevant data

# Application Scenarios

## Products Features



## Functional characteristics

- Embedded installation, simple, convenient management.
- Has rich interface, which can realize fast data acquisition and processing.
- 9.7 -inch capacitive screen, good man-machine interface and touch performance.
- Front-facing camera, the camera records operator.
- Manageable smart devices and temperature and humidity environment.
- Feature-rich, configurable linkage alarm and SMS alarm, etc.



## Back stage management

The front-end application is embedded in the background management WEB interface, which simplifies the operation and maintenance methods.

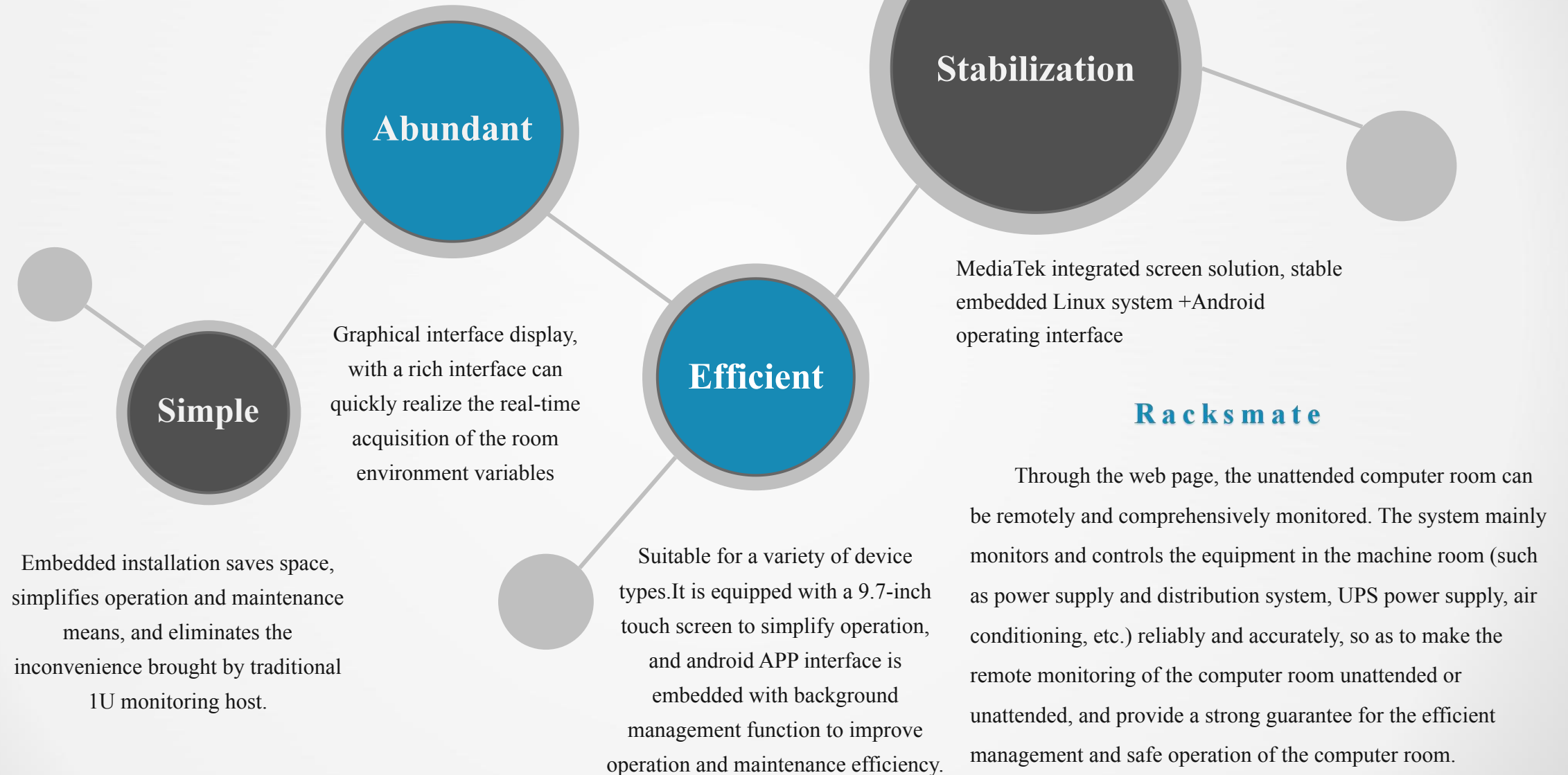


## The front-end display

With a rich interface can quickly realize the real-time data acquisition of the computer room environment. Graphical interface display and centralized network monitoring management.

# Product Introduction

## Application Analysis



# Product Introduction

## Application Area



### Rackmate

Widely used in intelligent community, bank outlets, communication operators, radio and television, medical departments and other marginal room...

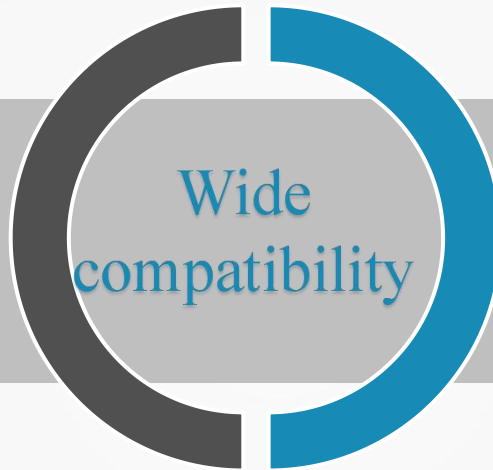


- Rackmate is mainly used in the single cabinet of the marginal machine room.
- The main equipment of the edge machine room can be monitored and controlled reliably and accurately.
- Provide a strong guarantee for the efficient management and safe operation of the computer room.



## B/S architecture

Background management supports a variety of browser access;  
No need to install software, can log in anytime and anywhere; One-key upgrade, one-key backup function.



## Compatibility

Compatible with 99% UPS, precision air conditioning, power distribution, etc.  
It is helpful for partners to choose products of different brands;  
No need to wait for the development of communication protocol to ensure the delivery date.



## Integration level

System integration provides rich secondary integration interface, so that you are not limited by the development platform, development language and development tools, so that you can easily integrate computer monitoring system.